

Shotover Primary School

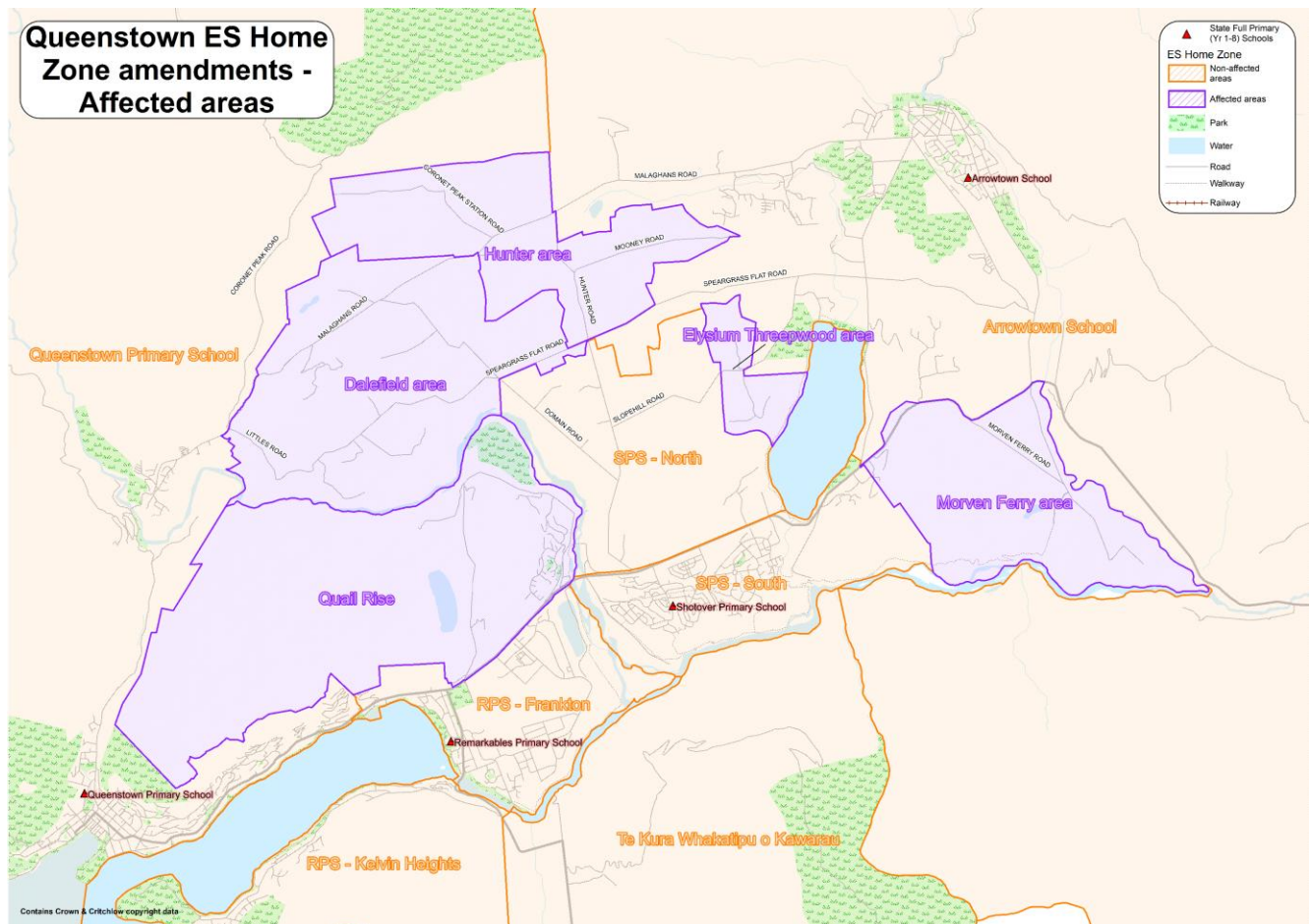
Amendment of Enrolment Scheme

Overview – what is changing?

The Ministry of Education is proposing to amend the existing enrolment scheme for Shotover Primary School and at the same time will be amending the enrolment scheme for Arrowtown School and Remarkables Primary School.

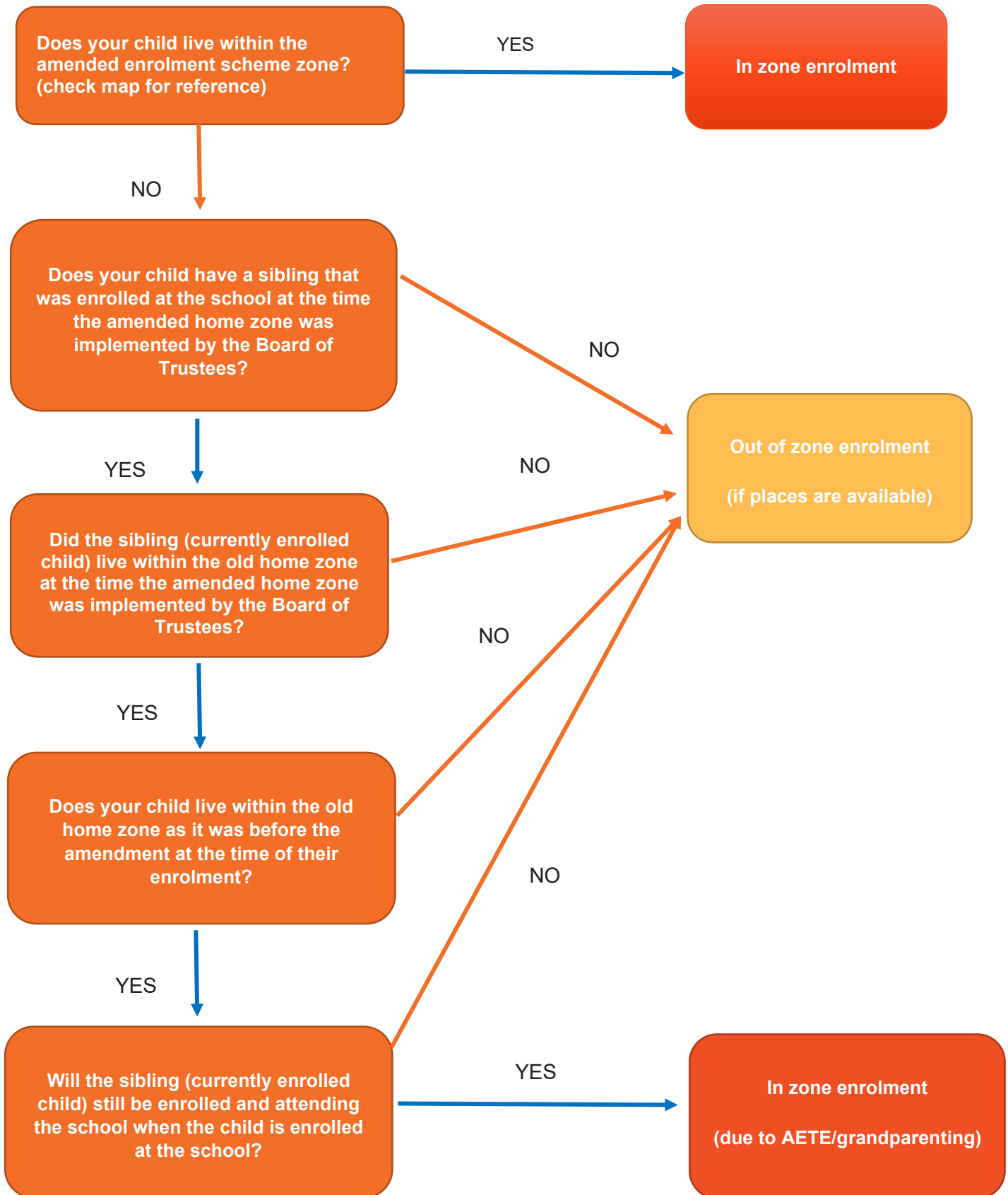
The Ministry is proposing to reduce Shotover Primary School home zone to reflect the need to slightly rebalance the home zones between the primary schools in the Wakatipu area. The proposed scheme and full written description can be found [here](#). Changes include:

- **Dalefield, Hunter, Elysium Threepwood and Morven Ferry areas** identified in the map below to become part of the Arrowtown School home zone and be removed from Shotover Primary School.
- **Quail Rise area** to be removed from Shotover Primary school home zone and included in Remarkables Primary School home zone.



Enrolment Scheme Amendment

Is my younger child eligible for 'Additional Enrolment to Enrol'?



Consultation process and timeline

The Ministry of Education is currently undertaking consultation about the proposed changes and new enrolment schemes. You can have your say by:

- Completing the survey at <https://www.education.govt.nz/have-your-say/wakatipu-basin-enrolment-scheme-amendments/details>
- This site also has further information about the proposed scheme.
- Emailing otagosouthland.enrolmentschemes@education.govt.nz if you have further questions or comments.

Consultation will run until **Thursday 18 June 2026**. The Ministry will consider all feedback and liaise with the Shotover Primary School before making a final decision. We expect the school community to be updated about the approved scheme during Term 4. The new scheme and changes will come into effect for **Term 1, 2027** enrolments.