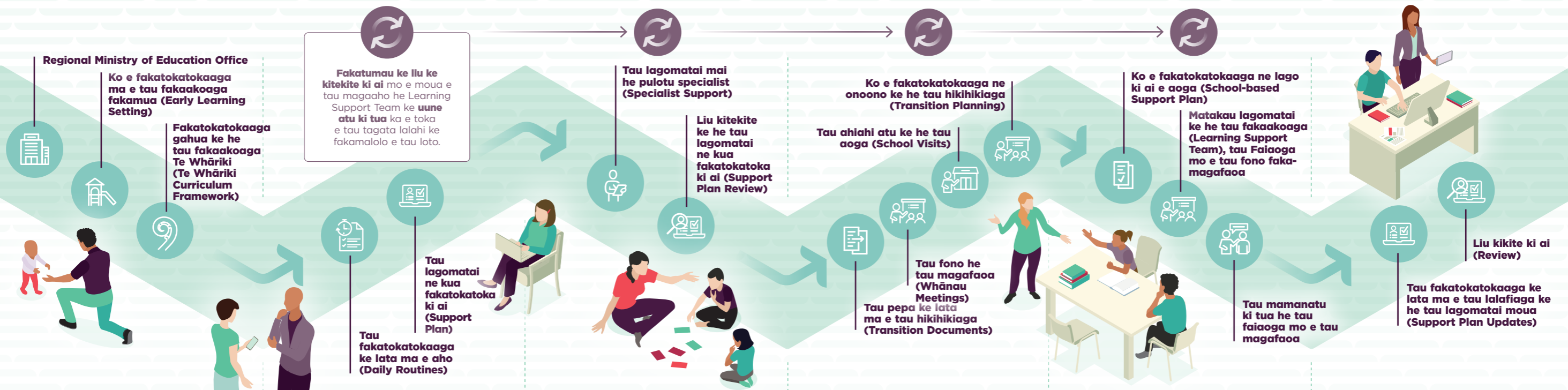


# Early Intervention Service Service Journey - 2026 Onwards



Uho ke he faahi gahua nei e tau tama fakaako ne kua lata ke moua foki e falu lagomatai ma e tau fakaakoaga, pihia mo e ha lautolu a tau mamatua, tau magafaoa mo e tau matakainaga mo e laua ai ke he tau lakaaga oti. Ko e fakatino nei ne fakakite e tau puhala ne moua e lautolu e tau lagomatai tali mai he ikiiki ke hoko atu ke he Year Two he aoga. Folaola e tau lakaaga ne mua, ko hai ne putoia ki ai, mo e ko e heigoa ka taute he tau lakaaga fooku ke lagomatai e tau tama ha lautolu ke olaola ke he ha lautolu a fenoga fakaako.



## STAGE 1

**Mailoga e tau manako mo e tau ole ke moua e tau lagomatai (Identify Need & Request Support)**

### KO E HEIGOA E MENA NE TUPU?

- › Ko e tau tupetupe hāgāo ke he taha tama ne kua fakakite he tau magafaoa, tau faiaoga, po ke tau leveki ke he tau malolo tino.
- › Ko e tau fakatutalaaga fakamua mo e magafaoa.
- › Ko e tau fakaataaga mai he tau mamatua ke taatu ke moua e tau lagomataiaga ke he tau fakaakoaga.
- › Tuku ki ai e taha ole ke moua e tau lagomataiaga.

### KO HAI LA KA PUTOIA KI AI?

- › Faiaoga Fakamahani
- › Tau pulotu ke he tau malolo tino (tuga e Paediatrician - ekekafo ke he tau fanau po ke Child Development Team - matakaualeveki ke he fakatupuaga he moui he tama tose).
- › Ko e taha matakau hele ke he tau fakaakoaga - Early Intervention Specialist Team (ne maeke ke putoia ki ai e taha faiaoga hele tuai ke he tau lagomatai - Early Intervention Teacher, pulotu ke lagomatai ke he tau puhala vagahau - Speech-language Therapist, pulotu lagomatai ke he tau tatalu ke he tau manamanatuaga - Psychologist, pulotu hataki ke he tau fanau ne tuli e tau teliga - Advisers on Deaf Children, pulotu ke he tau malolo tino - Health Professionals)

## STAGE 2

**Okookoaga ke he tau vala tala mo e tau fakatokatokaaga (Information Gathering & Planning)**

### KO E HEIGOA E MENA NE TUPU?

- › Okooko ke he tau vala tala (Kohikohi) mo e atihake e tau fakafetuiaga mo e tau tagata ne iloa mitaki e tama, lalafi ki ai e maamaaga ke he leo vagahau mo e aga fakamotu he tama.
- › Manamanatu ke he kakano mo e fakatutala mo e magafaoa ke lagomatai ke he tau manako.
- › Fakalaulahi ke he taha fakatokatokaaga lagomatai (Tātai) ne fakagahuahua ke tau takatakai motu mo e tau fakaholoaga kua mahani ki ai ke he tau aho oti.
- › Gahuahua auloa e tau EIS Specialists ke okooko e tau valatala mo e gahuahua auloa.

### KO HAI LA KA PUTOIA KE HE KAU GAHUA NEI?

- › Ko e matakau hele tuai ke he tau fakaakoaga - Early Intervention Specialist Team
- › Faiaoga he aoga Fakamahani

## STAGE 3

**Fakagahuahua ke he fakatokatokaaga lagomatai (Implement Support Plan)**

### KO E HEIGOA E TAU MENA NE FAE TUTUPU?

- › Fakagahuahua e lautolu ne tata atu ke he tama, putoia foki a lautolu e tau magafaoa po ke faiaoga e fakatokatokaaga.
- › Liu tumau ke kitekite ke he fakaholoaga mo e tau mena tutupu mai ai.
- › Ha i ai e taha fakatutalaaga ne tali ke he huhu: "Iloa fefe e tautolu kaeke kua kautu a tautolu?"

### KO HAI LA KA PUTOIA KI AI?

- › Kaiako po ke Faiaoga
- › Ko e matakau hele tuai ke he tau fakaakoaga - Early Intervention Specialist Team
- › Tagata gahua lagomatai ke he tau fakaakoaga (Educational Support Worker - ESW)

## STAGE 4

**Teuteu ke lata ma e aoga (Preparing for School/ Kura)**

### KO E HEIGOA E TAU MENA NE FAE TUTUPU?

- › Fono ke fakatokatoka e tau hihikihiaga ne kua fai matutakiaga mo e tau tagata gahua ke he tau fakaakoaga fakamua mo e tau tagata gahua he aoga.
- › Tufatufa e tau talahuaga ke he tau fakaakoaga mo e tau mohe miti he tama.
- › Fakalaulahi he aoga e maamaaga ke he tau malolo he tama.
- › Fakamahino ke he tau lagomatai ne maeke ke moua tuga e ORS/ High Health.
- › Ko e fifiliaga ne kua moua hāgāo ke he tukuaga he faiaoga lagomatai.
- › Fakamahino mo e maali e tau mohe miti mo e tau mena ka moua mai.

### KO HAI LA KA PUTOIA KI AI?

- › Faiaoga he aoga Fakamahani
- › Faiaoga ke he tau fanau fooku ke he aoga
- › Ko e tau Learning Support Coordinators (LSC) ki loto he tau aoga
- › Special Needs Coordinator (SENCO)
- › Ko e matakau hele tuai ke he tau fakaakoaga - Early Intervention Specialist Team
- › Faiaoga lagomatai - Teacher Aide

## STAGE 5

**Lagomatai he aoga - Support at School**

### KO E HEIGOA E MENA TUPU?

- › Ko e faiaoga poko aoga ne fae takitaki e fakagahuahuaaga he fakatokaaga ke he tau lagomatai ke he tau fakaakoaga.
- › Ko e tau pulotu specialist ne lagomatai ke he tau mamatua he tau fanau i loto he fale aoga.
- › Onono ke he tau fakaholoaga ki mua mo e tau hihikihiaga ke he tau lagomatai, putoia ki ai e tau kitekiteaga mau ke he tau puhala ke he tau hihikihiaga.
- › Onono mau ke he tau fakaholoaga ki mua o e tau hokotakiaga ke he tau mena kua moua mai (Whai Whakaaro).

### KO HAI LA KA PUTOIA KI AI?

- › Tau faiaoga he tau pokaoga - Classroom Teachers
- › Ko e matakau hele tuai ke he tau fakaakoaga - Early Intervention Specialist Team
- › Ko e Learning Support Coordinator (LSC)
- › SENCO
- › Faiaoga lagomatai - Teacher Aide
- › Faiaoga ke he tau koloa fakaoga ma e tau fakaakoaga mo e tau agaaga mahani - Resource Teacher Learning and Behaviour (RTL) - 2026 Transition Year

## STAGE 6

**Ko e ononoaga ke he tau fakaholoaga ki mua mo e fakatokaaga ma e Year Two - Review Progress and Plan for Year Two**

### KO E HEIGOA E TAU MENA TUTUPU?

- › Liu kitekite ke he tau fakaholoaga ki mua mo e tau lagomatai ne kua lata ke moua. Ke he tau fanau ne tokoluga mo e ukauka e tau manako lagomatai, to tumau ke moua e tau lagomatai.
- › Kaeke kua malolo e tau loto he tau mamatua to fakatoka he Learning Support Team mo e uune atu ki tua.
- › Taute e tau fakatokatokaaga ke lata ma e takatakai ke he tau fakaakoaga foki.
- › Kitia mitaki e tau lagomatai ke lata ma e anoaha tuga e tau mahani fakaako, mo e tau lagomataiaga ke lata ma e tau vagahau

### KO HAI LA KA PUTOIA KI AI?

- › Tau faiaoga he tau pokaoga - Classroom Teachers
- › Ko e matakau pulotu ne hele tuai ke lagomatai ke he tau fakaakoaga - Early Intervention Specialist Team
- › Ko e Learning Support Coordinator (LSC)
- › SENCO
- › Faiaoga lagomatai - Teacher Aide
- › Faiaoga ne fakaoga e tau koloa fakaako ke lata ma e tau fakaakoaga mo e tau agaaga mahani - Resource Teacher Learning and Behaviour (RTL)