



**Te Tāhuhu o
te Mātauranga**
Ministry of Education

Attendance webinar series

Understanding Attendance Management Plans & the
Stepped Attendance Response (STAR) Framework

18 November 2025



**Te Kāwanatanga
o Aotearoa**
New Zealand Government

Nau mai, haere mai!

Tēnā koutou, tēnā koutou, tēnā koutou katoa.
Nga mihi nui ki a koutou katoa

We look forward to speaking with you shortly.

Please note we will be providing you with a
copy of the slides and a recording of the
session.

Please pop any pātai in the chat.

Ngā mihi nui 😊

Agenda

- Welcome and opening karakia
- Presentation on Attendance Management Plans and the STAR framework
- Pātai/Q+A session
- Next steps
- Closing remarks and karakia

Ka Hikitia Karakia tīmanga (opening)

Ka Hikitia! Ka Hikitia!

Hiki, Hik itia!

Whakarewa ki runga rawa

Herea kia kore e hoki whakamuri mai

Poua atu Te Pūmanawa Māori

He Mana Tikanga

Me Te Uri o Māia

Poipoia ngā mokopuna

Ngā Rangatira mo āpōpō

Ka tihei! Tihei mauriora!

Encourage and support!

And raise it to its highest level!

Ensure that high achievement is maintained

Hold fast to our Māori potential

Our cultural advantage

And our inherent capability

Nurture our young generation

The leaders of the future

Behold, we move onwards

and upwards!



**Te Tāhuhu o
te Mātauranga**
Ministry of Education

What we'll cover today

- Why Attendance Management Plans matter for your school
- How AMPs and the STAR framework work together
- What's changing in your SMS and how it helps you
- Resources to make implementation easier
- Key dates and what to expect next

We know you already do a lot to support attendance, AMPs are about making that work clearer and easier

What are Attendance Management Plans?

- From Term 1, 2026, all state and state-integrated school boards, (except Te Aho o Te Kura Pounamu), must have an AMP.
- AMPs bring your existing attendance practices into one clear plan.
- They provide pathways to identify and address absences early
- Based on the Education and Training Act 2020 and updated Attendance Regulations.
- Most schools can build on what they already do. AMPs make it easier to show your approach.



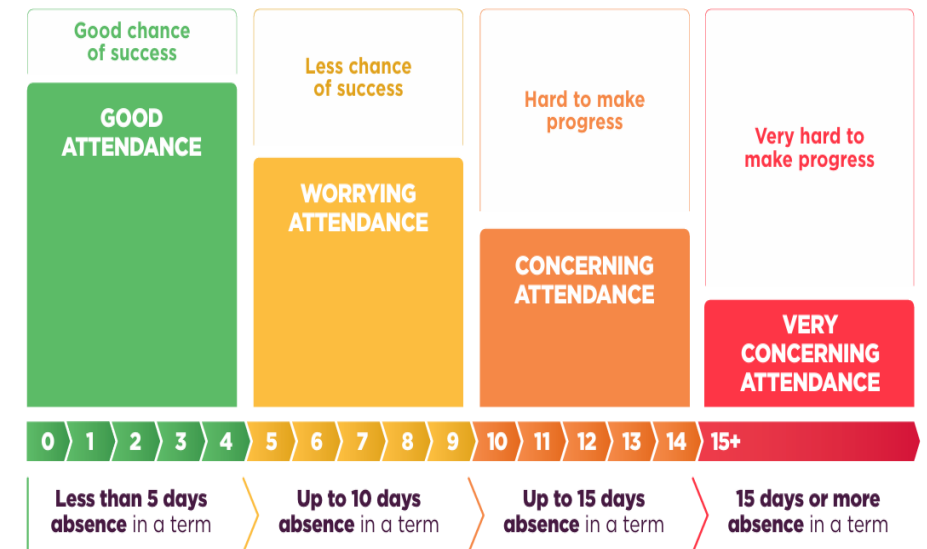
Key components of an Attendance Management Plan

- **Strategic objectives and progress** | Set priorities, targets and reviews
- **Actions at Attendance Thresholds (5, 10, 15 days per term)** | Outline responses for each level of absence
- **Use STAR guidance** | Apply the framework to shape responses
- **Investigating and recording absences** | Follow up on every absence and record actions taken at thresholds
- **Identifying patterns and barriers** | Processes to spot trends and address underlying causes
- **Share with your Community** | Publish plan on website



What is the STAR?

- STAR means Stepped Attendance Response
- Provides a tiered approach at 5, 10 and 15 day absence thresholds during a term
- Outlines expectations for schools, whānau, and the wider system at each threshold
- Applies to all absences, justified or unjustified, with appropriate, differentiated responses
- Flexible so you can adapt it to your school's context
- AMPs and STAR work together. AMP is your plan, STAR is the guidance framework you use



New SMS features to support your AMP

- From Term 1 2026, SMS (Student Management System) providers will deliver new functionality to make it easier to:
 1. Spot Patterns Quickly
 - See threshold attendance trends at a glance
 - Identify students who need support early
 2. Automatic Alerts and easy Recording
 - Get notified when students reach 5, 10 or 15 day thresholds
 - Consistently record threshold response actions
 3. Share Attendance Response Data to Improve What Works
 - Your SMS will send automated information to the Ministry so we can give clear insights on what's working and make it easier to plan next steps

Resources

Implementing an Attendance Management Plan

Information for School Leaders



Background

Starting from Term 1, 2026, all state, and state-integrated school boards must implement an Attendance Management Plan (AMP).

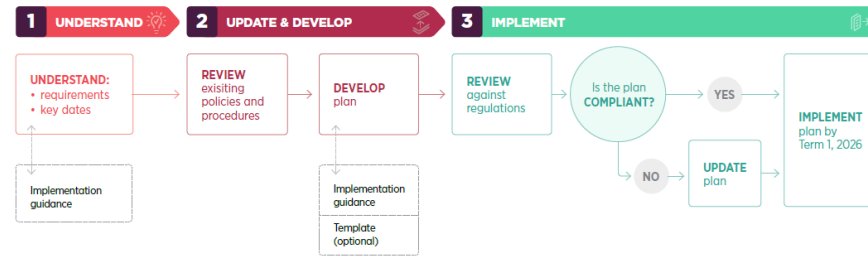
These plans are required by regulation to set out how schools will identify and respond to student absences at specific thresholds.

This information supports schools to work through the steps to develop and implement an Attendance Management Plan.

- 1 Understanding what is required in your plan
- 2 Updating or developing your plan
- 3 Implementing your plan

KEY DATES:

Term 4, 2025	Update or develop Attendance Management Plan
Term 1, 2026	Attendance Management Plan implemented



Attendance management plans

<https://www.education.govt.nz/education-professionals/schools-year-0-13/attendance/attendance-management-plans>

Implementing the Stepped Attendance Response (STAR)

Information for School Leaders

About

This document provides prompts to help you develop or refine your attendance strategy and embed the STAR. In this context 'attendance strategy' refers to your school's policies, procedures, practices, and plans related to attendance. References to 'parents' include anyone who is a student's parent or legal guardian. These prompts will help you review your current practices, align them with the STAR, reflect on your approach, and identify areas for improvement.

This document includes:

- information on the STAR, including its purpose and context
- what an effective attendance strategy looks like
- what to consider when reviewing your current strategy
- the benefits of the STAR, and how it can strengthen your current attendance strategy
- tools to support you to incorporate new activities
- information for embedding changes to your practice
- planning for future reviews of your attendance strategy



Stepped attendance response – STAR

<https://www.education.govt.nz/education-professionals/schools-year-0-13/attendance/stepped-attendance-response-star>

Next steps - AMP

Your plan must:

Be approved by your school board

- Ensure formal board sign-off

Be published online

- Make it accessible on your school's website and confirm visibility for whānau and community.

Be implemented for Term 1, 2026

- Assign responsibilities and timelines for rollout.



**Te Tāhuhu o
te Mātauranga**
Ministry of Education

Pātai | Questions and Answers

Ka Hikitia Karakia Mutunga (closing)

Kua hikitia te kaupapa

Kua takoto te wero

Me hoe tahi i runga i te whakaaro kotahi

Tiaki tō tāua oranga

Kia kaha ai mo te tuku taonga

Kia tutuki ngā hiahia mō Ka Hikitia

Tihei mauriora!

Ki te whai ao!

Ki te whai oranga e!

Mauriora!

We have come to an awareness

The challenge lies before us

Let us work together as one

Stay well so that we have the ability

to manage success

Behold, here is the pathway

to enlightenment and well-being

What a positive feeling!



**Te Tāhuhu o
te Mātauranga**
Ministry of Education



**Te Tāhuhu o
te Mātauranga**
Ministry of Education

He mea tārai e mātou te mātauranga
kia rangatira ai, kia mana taurite ai ōna huanga.

We shape an education system that delivers
equitable and excellent outcomes.

For more information
about the Attendance
Management Plans



Website: <https://www.education.govt.nz/education-professionals/schools-year-0-13/attendance/attendance-management-plans>

Email: attendance.programme@education.govt.nz



**Te Kāwanatanga
o Aotearoa**
New Zealand Government