



**Te Tāhuhu o
te Mātauranga**
Ministry of Education



Support with education for children who are Deaf or hard of hearing



Published: September 2025

About this Easy Read



This Easy Read is about the support children can get at school if they are:

- **Deaf**
- **hard of hearing.**



Deaf

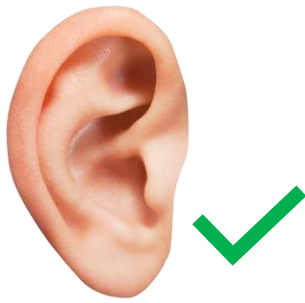
Being **Deaf / hard of hearing** means you have **hearing loss**.

Hearing loss means you cannot hear as much as other people.

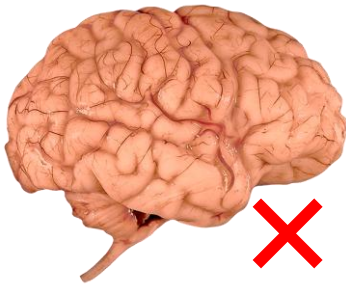


Being Deaf / hard of hearing means your hearing loss lasts:

- a long time
- forever.



Being Deaf / hard of hearing also includes people who have **auditory neuropathy disorder**.



Auditory neuropathy disorder is when:

- your ears can hear sound
- the messages from your ears do not get to your brain.



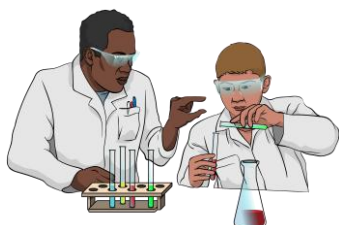
This can make it hard to understand other people when they talk to you.



People can be Deaf / hard of hearing in:

- 1 ear
- both ears.

This Easy Read is from the **Ministry of Education**.



The **Ministry of Education** is the part of the Government in charge of schools in Aotearoa New Zealand.

The Ministry of Education does things like:

- deciding what schools should teach
- supporting children who need extra support with their learning
- building new classrooms.

Children who are Deaf / hard of hearing can get support until they leave school.

Working out if a child needs support



The Ministry of Education provides support to work out if a child has hearing loss.



Your child can get this support until they leave school.



All babies can get a **hearing screening check** soon after they are born.



A **hearing screening check** is a test that checks how well someone can hear.



Doing hearing screening checks on babies means we can work out who needs support with hearing early.

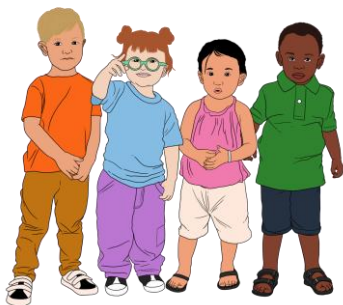


Talk to your doctor if:

- your child did not have a hearing screening check when they were a baby
- you are worried about their hearing.



The Ministry of Education will work with you to support your child when the hearing screening check shows they are Deaf / hard of hearing.



The hearing screening check is free when your child is 6 weeks to 5 years old.



It is done by a Well Child Tamariki Ora service like Plunket.



You can find out more on this **website:**

<https://tinyurl.com/49advnfj>

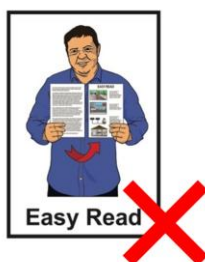


Talk to your doctor about how to get a hearing screening check if your child is over 5 years old.



You can find out more on this **website:**

<https://tinyurl.com/4b2vvnbx>



The websites in this section are **not** in Easy Read.

What support can my child get?



Different children have different needs.

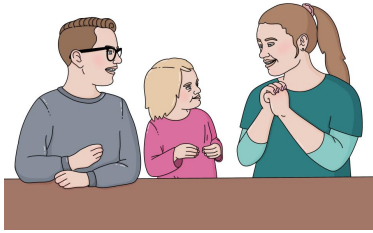
The Ministry of Education will make sure your child gets the support they need.



The Ministry of Education has **Advisors on Deaf Children.**



The Ministry of Education sometimes calls Advisors on Deaf Children **AoDC** for short.



AoDC work with:

- children who are Deaf / hard of hearing
- their whānau / families
- their teachers.

Advisors on Deaf Children will work out how to support your child with things like:

- communicating
- learning language
- learning:
 - in **early childhood education**
 - at school.



Early childhood education means places children go to learn before they start school like:

- kindy
- preschool.



AoDC work with children who are Deaf / hard of hearing:

- from when they are born
- until they are in Year 3 at school.



AoDC can also work with older children.



When your child starts early childhood education the AoDC might ask **Ko Taku Reo | Deaf Education New Zealand** for support.



Ko Taku Reo | Deaf Education

New Zealand is in charge of supporting children who are Deaf / hard of hearing with learning.



Ko Taku Reo | Deaf Education New Zealand provides support like:

- **Resource Teachers of the Deaf**
- **New Zealand Sign Language tutors**
- **specialist schools.**





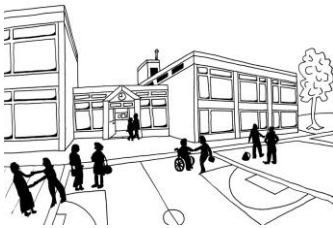
Resource Teachers of the Deaf

support children who:

- are Deaf / hard of hearing
- go to **mainstream** schools.



Here a **mainstream** school means a school that is not only for children who are Deaf / hard of hearing.



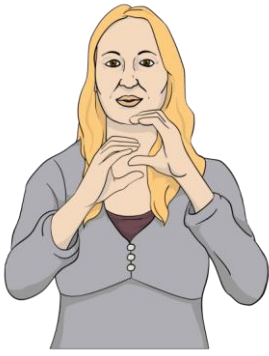
All children can go to a mainstream school.



Resource Teachers of the Deaf can do things like:

- teach your child
- support the classroom teacher to teach your child.





New Zealand Sign Language
tutors teach New Zealand Sign
Language to Deaf children.



They also support:

- the whānau / families of Deaf children to get better at New Zealand Sign Language
- teachers of Deaf children to get better at New Zealand Sign Language.



In this Easy Read we call New
Zealand Sign Language **NZSL** for
short.



Here **specialist schools** are schools for Deaf students.



The teachers at specialist schools know how to teach Deaf children.



Sometimes children at specialist schools will go to mainstream classes with support from the specialist school.



The AoDC will also work with other services like:

- **Deaf Aotearoa First Signs**
- **Health New Zealand | Te Whatu Ora**
- **cochlear implant programmes.**





Deaf Aotearoa provides support for all Deaf people in Aotearoa New Zealand.



Deaf Aotearoa First Signs supports:

- Deaf / hard of hearing children aged 0 to 5
- their whānau / families.



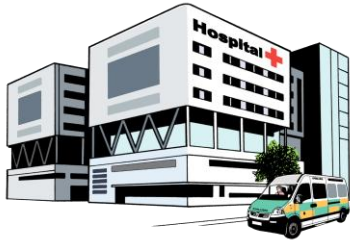
Deaf Aotearoa First Signs provides support with things like:

- learning NZSL
- learning about being Deaf / hard of hearing in Aotearoa New Zealand
- meeting other people who are Deaf / hard of hearing.



Te Whatu Ora

Health New Zealand



Health New Zealand | Te Whatu Ora is the part of the Government in charge of health services in Aotearoa New Zealand.

They do things like running hospitals.



Cochlear implants are tools that support people with hearing loss to hear.



Cochlear implant programmes pay for cochlear implants for people who need them.

More information



He Pukapuka Āwhina mā ngā Whānau – The Family Book is a book with information for whānau / families with a child who is Deaf / hard of hearing.



You can find the book on this **website**:

<https://tinyurl.com/3eup47yv>



You can learn NZSL for free on this **website**:

www.learnnzsl.nz/



You can find out more about Deaf Aotearoa on this **website**:

www.deaf.org.nz



You can find out more about Deaf Aotearoa First Signs on this **website**:

<https://firstsigns.co.nz>



Deaf Children New Zealand supports whānau / families of children who are Deaf / hard of hearing.



You can find out more on their **website**:

<https://deafchildren.org.nz>



To get support from the Ministry of Education:

- phone your **regional office**
- email your regional office.

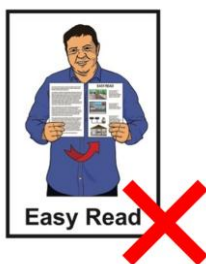


Your **regional office** is the part of the Ministry of Education in charge of the place in Aotearoa New Zealand where you live.



You can find out how to phone / email your regional office on this **website**:

<https://tinyurl.com/2rtynfur>



The websites in this section are **not** in Easy Read.



This information has been written by the Ministry of Education.



It has been translated into Easy Read by the Make it Easy Kia Māmā Mai service of People First New Zealand Ngā Tāngata Tuatahi.



The ideas in this document are not the ideas of People First New Zealand Ngā Tāngata Tuatahi.



All images used in this Easy Read document are subject to copyright rules and cannot be used without permission.



Make it Easy uses images from:



- Photosymbols
- Change Images
- Huriana Kopeke-Te Aho
- SGC Image Works
- T Wood
- Studio Rebeko
- Inga Kramer.